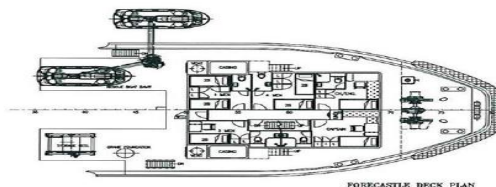
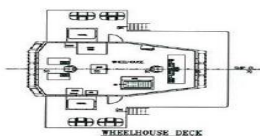
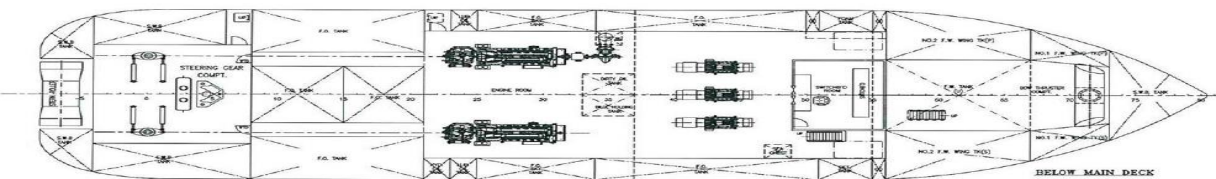
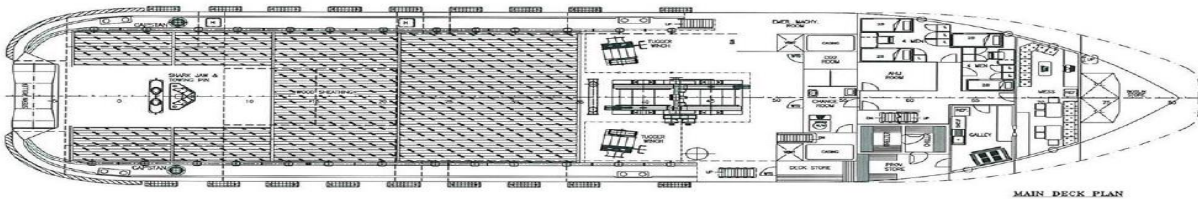
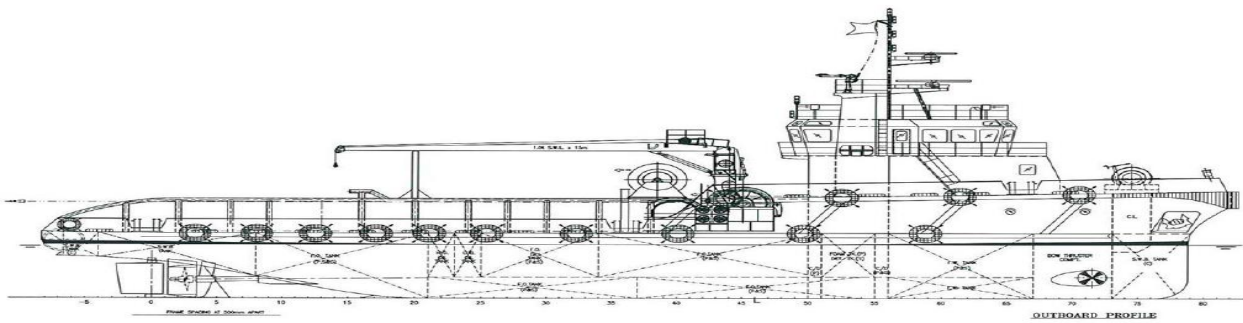




VETTAL MEGA SERVICES LTD
Marine and offshore support services



MV MANTA RAY 5 (EX MV WESTSEA PHOENIX) _AHTS/4200BHP/57T BP



MV MANTA RAY 5(EX MV WESTSEA PHOENIX) _AHTS/4200BHP/57T BP**MAIN PARTICULARS**

Class	Lloyd's Register (LR)
Year of Build	2009
Flag	Nigeria
Port of Registry	Lagos, Nigeria
Design	Yuexin Shipbuilding Co. Ltd, China
LOA	45.0m
Breadth	11.8m
Depth	4.6m
Design Draft	3.8m

PERFORMANCE

Max Speed	12 knots
Service speed	10 knots
Bollard Pull	57.26T
Fuel consumption	8.0m ³ per day (Tow approx.) 6.0m ³ per day (Free running) 1.0m ³ per day (Standby)

CAPACITIES

Deadweight	494.84Tons
Gross Tonnage	646Tons
Clear Deck Area	180m ²
Deck Crane	1 ton x 15m
Deck Strength	7.5/m ²
Drill/Ballast	64.53m ³
Fuel Oil	530m ³
Fresh Water	170m ³
Foam Tank	8.84m ³

DECK EQUIPMENT

Tugger Winch	2 x 5T Electro-Hydraulic @ 15m/min
Towing winch	100T line pull in 1 st layer Break Holding 150T
Towing Drum	1000 x 52mm wire, lo
Anchor Chain	2 x 32mm stud link chain
Bow Anchors	2 x 1000kg bow anchors
Shark Jaw	150T SWL
Towing Pin	150T SWL
Stern Roller	4.5mtrs

PROPULSION AND MACHINERY

BHP	4200HP
Main Engines	2 x 2100BHP @ 1600rpm
Main Engines	Caterpillar 3516B
Propulsion Aft	2 x Fixed Pitch Propellers (FPP)
Bow Thrusters	STT170 TLK 5 Ton
Main Generators	3 x Caterpillar 3406C
Diesel Generator	3 x 245 kW
Emergency Generators	Volvo D5A-T/TA (1700W)

ACCOMMODATION

Single Bert Cabins	2 x 1 men cabin = 2 men
Double Berth cabins	3 x 2 men cabin = 6 men
Four Berth cabins	2 x 4 men cabin = 8 men
Total Accommodation	16 men

LIFE SAVING EQUIPMENT

Rescue Boat Davit	1 x 6 persons
Life Raft	2 x 20 persons 2 x 25 persons
Life Buoy	8 sets
Life Jacket	40 sets
Parachute	12 sets
Hand Flares	6 sets
First Aid Kit	

FIRE FIGHTING EQUIPMENT

FiFi Pumps	1 x 1200m ³ /hr Caterpillar 3516B 60m ³ /hr 43m ³ /hr Electric Driven
Fire Hydrants	3 x E/R & 04 Weather Deck
Fire Alarm	YES
Fire Detection System	YES
Fire Extinguishers	35
Foam Applicator	1
Wheeled Foam Extinguisher	1
Fixed FiFi (CO2) System	YES
Breathing Apparatus	6 sets
Fireman's Outfit	2 set (fully equipped)
EEBD	22

RADIO AND NAVIGATION EQUIPMENT

VHFs/DSC	2 FURUNO
Navtex Receiver	1 FURUNO
SART	2 ALR
DGPS/AIS	1 FURUNO
Magnetic Compass	1 SAURA KEIKI
Navigation Lights	YES
GPS/Echo Sounder	1 FURUNO
Speed Log	1 FURUNO
INMARSAT	1 FURUNO
BNWAS/MF	1 FURUNO
Gyro Compass/ECDIS	1 SIMRAD
EPRIB	1 MCMURDO
3 Two-way VHF	SIMRAD
Radar	2 x-Band (1)/S Band Radar- FURUNO/KODEN
Barometer	1 WALKER